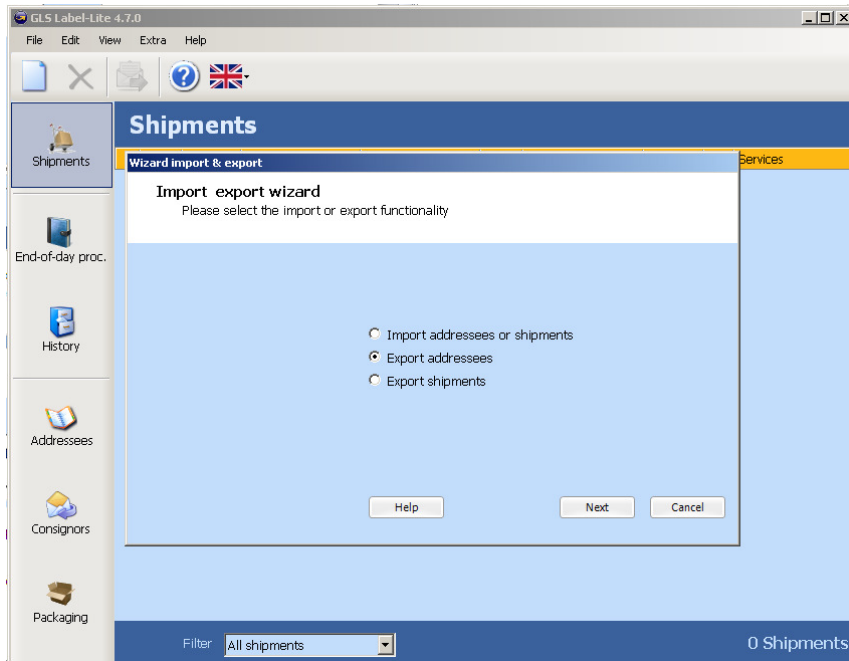
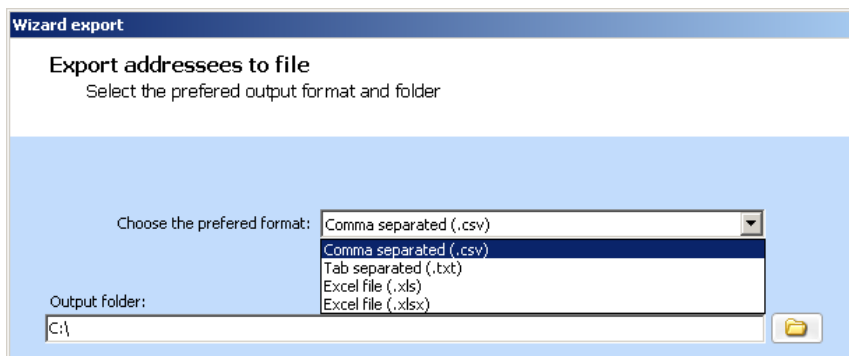


Export your addresses from Label-lite and import in Label-Lite Online

To export your addresses from Label-Lite, follow the next instructions:



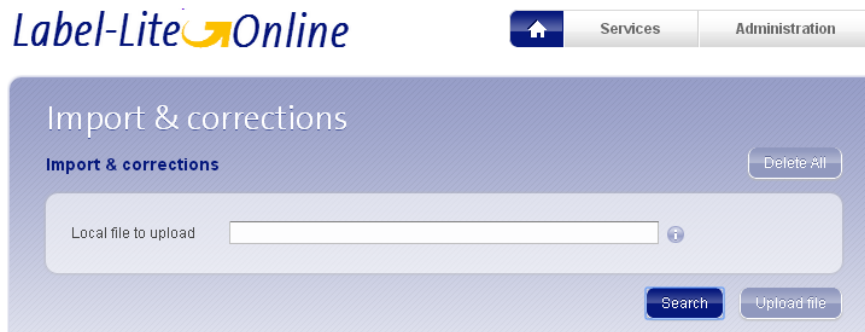
Select *Import & Export* in the menu *Extra* and select *Export addressees*. Then select the file format **comma separated(.csv)** and the folder to which you want the export the file.



If you did not provide an export directory, you will find the export addresses file in the default export directory of Label-Lite :

C:\Program Files\GLS\Label-Lite 4\Export\LLAddresseesExport.csv

To import your addresses from Label-Lite, follow the next instructions:

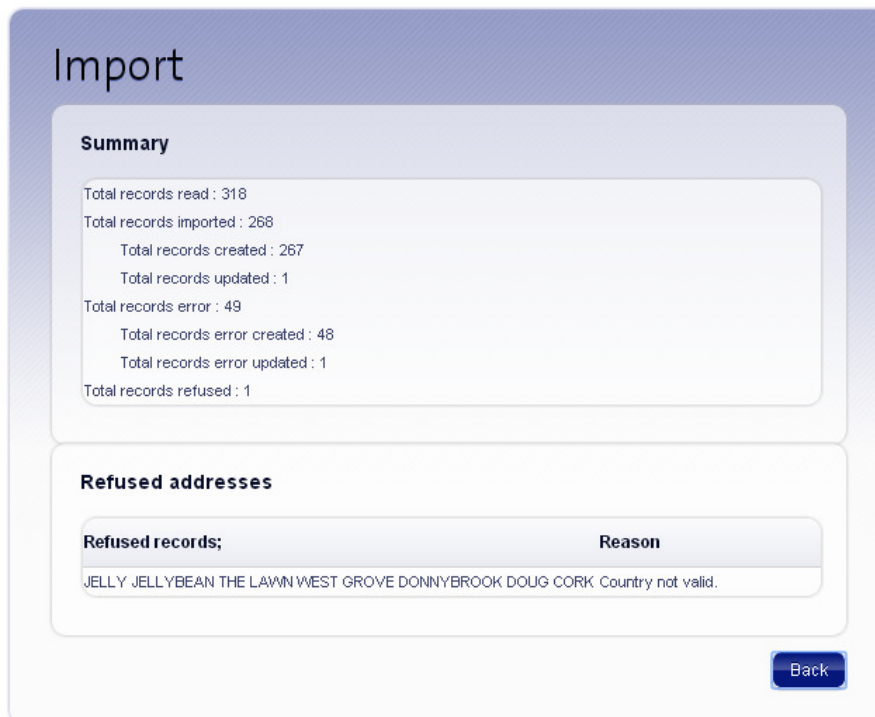


Select *Import & corrections* from the menu *Addresses*.

Click Browse and go to the directory where you saved the Label-Lite export file, default :
 C:\Program Files\GLS\Label-Lite 4\Export\ LLAddresseesExport.csv

In this window click *Open* and then select *Upload file*.

After importation of the file you will get an overview of the imported and refused addresses.



You can correct or delete the records in error.

